

## Safety shower and ASA closed eyewash with 300 liter boiler unit

### STD-TC-100KS/45G

When a reliable hot water supply is not readily available, or in environments that experience low ambient temperatures, this temperature controlled safety shower with eye/face wash unit offers the solution. A 300 litre integral heated water tank remains on standby to deliver 15 minutes of water within the tepid range, meeting EN 15154-5 and ANSI 358.1 recommendations. The high flow rate thermostatically controlled mixing valve ensures the temperature is maintained at between 22-28°C.

Suitable for indoor or outdoor use, this model can be used in areas classified as hazardous or non-hazardous.



## Specifications

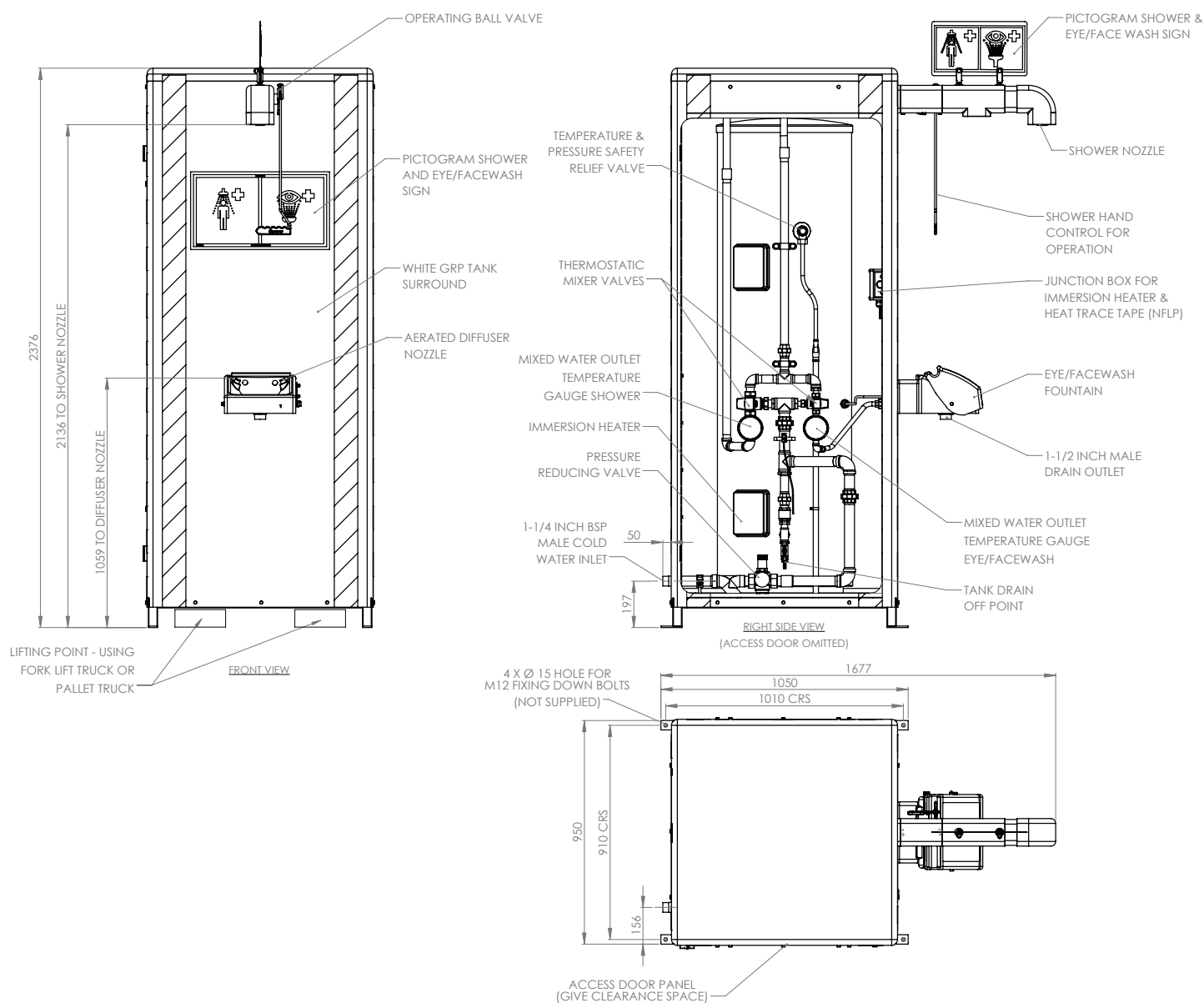
MATERIALS OF CONSTRUCTION	
PIPEWORK & FITTINGS	Stainless steel 316
FRAME	Stainless steel
OPERATING VALVE	Stainless steel 316, full bore, stay open ball valve
SHOWER NOZZLE	Injection moulded nylon 6
EYE WASH	ASA (acrylonitrile styrene acrylate)
EYE WASH DIFFUSERS	Chrome plated brass retaining ring, stainless steel filter mesh, plastic body
INSULATION & OUTER CASING	Polyurethane foam insulation with GRP outer casing
SERVICES	
ELECTRICAL EQUIPMENT (FOR HAZARDOUS AREAS)	ATEX Zone 1 & 2. Gas groups IIA & IIB. Temp Class T3
ELECTRICAL SUPPLY	230/240V, single phase, 50/60Hz (110V optional)
HEATING TYPE	Immersion heated insulated tank
HEATING LOAD	3kW @ 240V / 1.7kW @ 110V
WATER TEMPERATURE SET POINT	Factory set to 25°C (77°F). Adjustable.
PRESSURE REDUCING VALVE	Factory set at 3 BAR G (43 PSI)
WATER INLET	1 1/4" male BSP
OPERATING PRESSURE	2,2 to 6 BAR G / 29 to 87 PSI (higher supply pressures accommodated with the incorporation of the optional pressure reducing valve)
MINIMUM FLOW RATES	Shower: 76 L per minute / 30 US gal per minute Eye wash: 12 L per minute / 3 US gal per minute
AMBIENT OPERATING TEMPERATURE	
MINIMUM	-25°C / -13°F
MAXIMUM	40°C / 104°F
OPERATION	
SHOWER	Pull handle
EYE WASH	Pull lid down
DIMENSIONS & WEIGHT	
DIMENSIONS (WxDxH)	950mm (37.4in) x 1677mm (66in) x 2446mm (96.3in)
WEIGHT	230kg (507lb)

# General Arrangement Drawing



Safety shower and ASA closed eyewash with  
300 liter boiler unit

STD-TC-100KS/45G



[www.hughes-safety.com](http://www.hughes-safety.com)