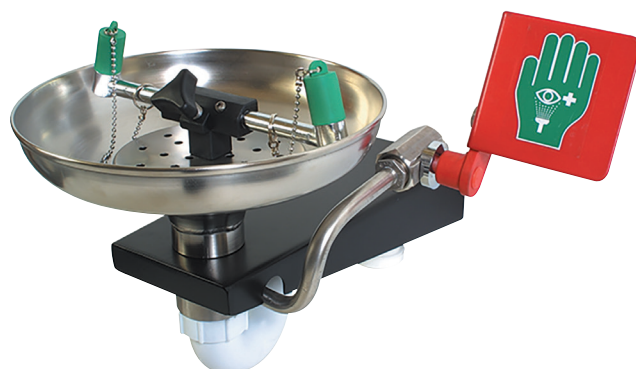


Wall mounted stainless steel open bowl - eyewash

STD-85G

Where there is a risk of a chemical spillage or splash an eye/face wash is imperative. This open bowl stainless steel variant is corrosion resistant and durable. Featuring fine mesh strainers and individual flow controllers designed to give a gentle flow of 12 litres of aerated water per minute. Meets the requirements of EN-15154 and ANSI Z358.1-2014.

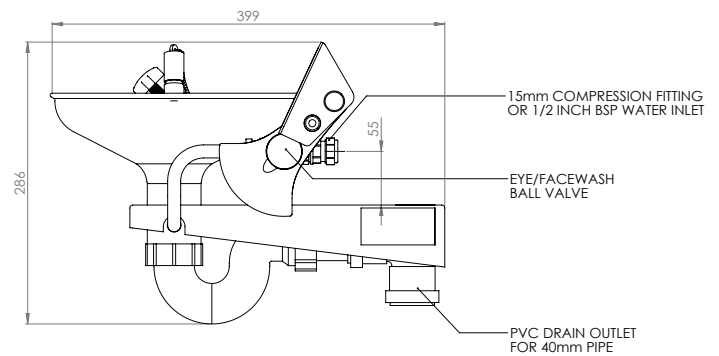
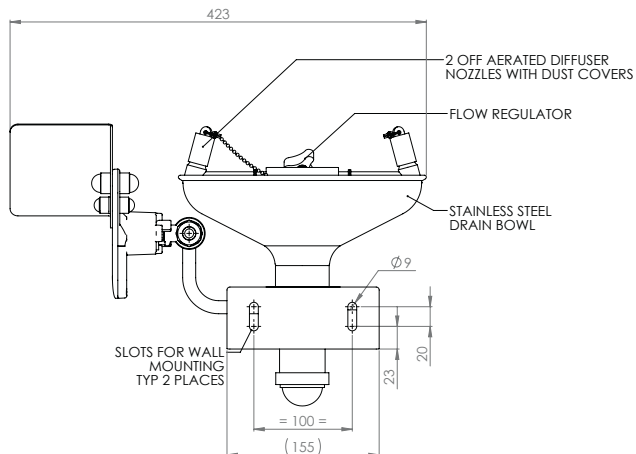


Specifications

MATERIALS OF CONSTRUCTION	
BOWL	Stainless steel
DIFFUSERS	Chrome plated brass retaining ring, stainless steel filter mesh, plastic body
STANDARD FINISH	Polished brush finish
SERVICES	
WATER INLET	1/2" Female BSP
OPERATING PRESSURE	2.0 to 6 BAR G / 29 to 87 PSI (higher supply pressures accommodated with the incorporation of the optional pressure reducing valve)
MINIMUM FLOW RATES	12 L per minute / 3 US gal per minute
AMBIENT OPERATING TEMPERATURE	
MINIMUM	5°C / 41F
MAXIMUM	35°C / 95F
OPERATION	
EYE/FACE WASH	Push plate
DIMENSIONS & WEIGHT	
DIMENSIONS (WxDxH)	423mm (16.6in) x 399mm (15.7in) x 286mm (11.2in)
WEIGHT	4kg / 9lb

Wall mounted stainless steel open bowl - eyewash

STD-85G



www.hughes-safety.com