

## Wall mounted ASA closed eyewash

### STD-45G

Suitable for indoor use, this eye/face wash is essential for potentially hazardous industries and applications. The integral acrylic capped ASA lid connects to the water valve for automatic operation when the lid is pulled down.

The unit benefits from chemical and UV resistance, as well as excellent durability due to the ASA construction. An improved washing action is achieved via the high flow rate aerated diffusers. Meets the requirements of EN-15154 and ANSI Z358.1-2014.



## Specifications

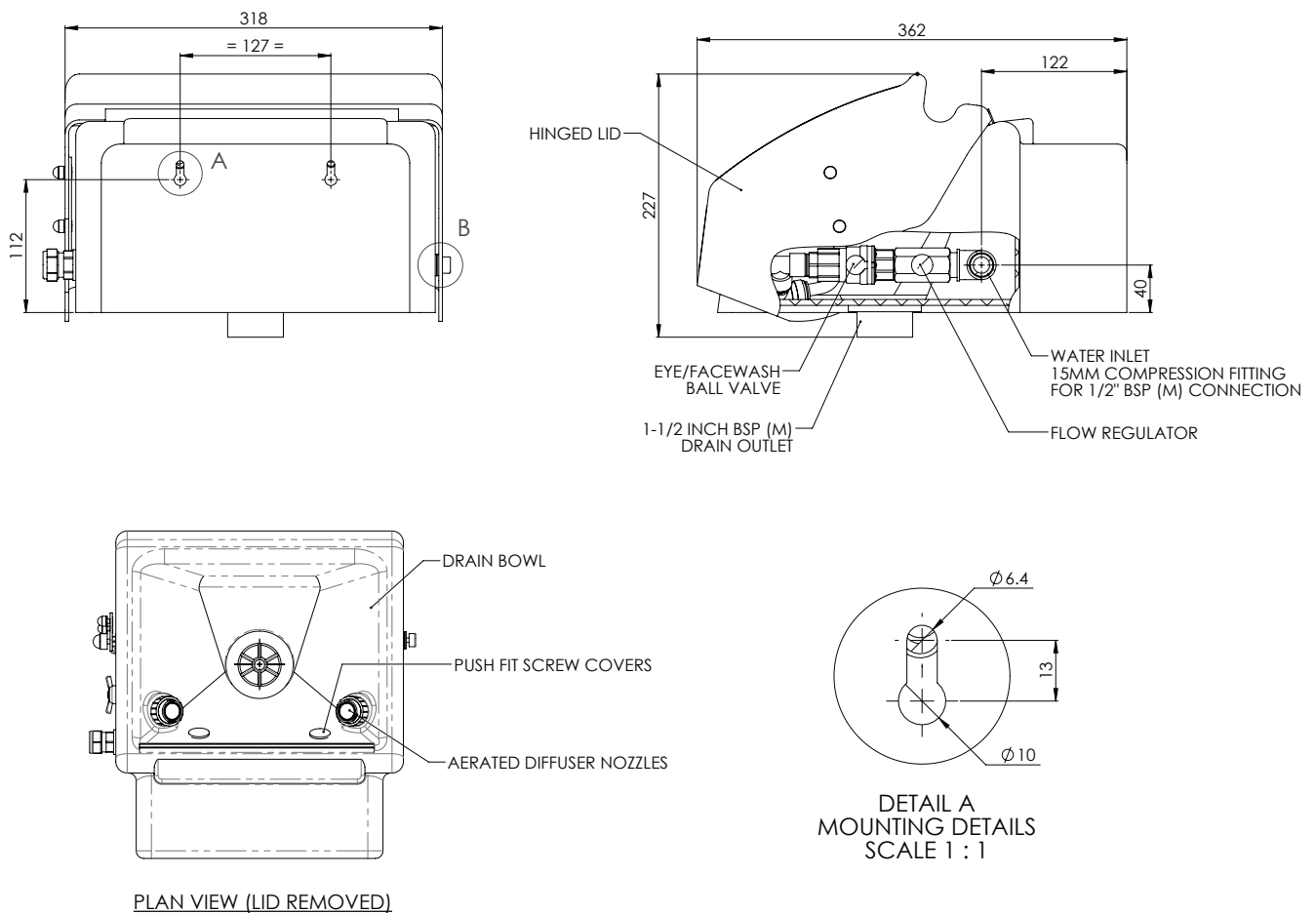
MATERIALS OF CONSTRUCTION	
BOWL/LID	ASA (acrylonitrile styrene acrylate)
DIFFUSERS	Chrome plated brass retaining ring, stainless steel filter mesh, plastic body
STANDARD FINISH	White with green pictogram sign
SERVICES	
WATER INLET	1/2" Female BSP
OPERATING PRESSURE	2.0 to 6 BAR G / 29 to 87 PSI (higher supply pressures accommodated with the incorporation of the optional pressure reducing valve)
MINIMUM FLOW RATES	12 L per minute / 3 US gal per minute
AMBIENT OPERATING TEMPERATURE	
MINIMUM	5°C / 41F
MAXIMUM	35°C / 95F
OPERATION	
EYE/FACE WASH	Pull lid down
DIMENSIONS & WEIGHT	
DIMENSIONS (WxDxH)	318mm (12.5in) x 362mm (14.3in) x 227mm (8.9in)
WEIGHT	3kg / 7lb

# General Arrangement Drawing



## Wall mounted ASA closed eyewash

STD-45G



[www.hughes-safety.com](http://www.hughes-safety.com)