

Mobile safety shower with eyewash - 114 L – Indoor Use

STD-40K/45G

An essential addition to sites where a stationary safety shower and eye wash is unsuitable, for stand-by use in locations where no water supply is available, or when existing safety showers are undergoing maintenance.

Designed to supplement permanent plumbed-in models, the 114 litre unit is easy to manoeuvre as the location of the hazard changes during a project. This unheated model incorporates a polypropylene lined cylinder, heavy duty powder coated mild steel frame and large pneumatic tyres to aid mobility.

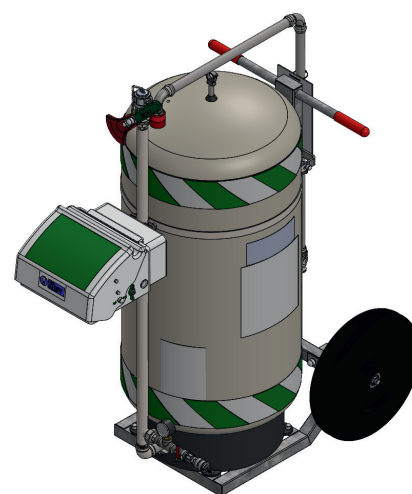
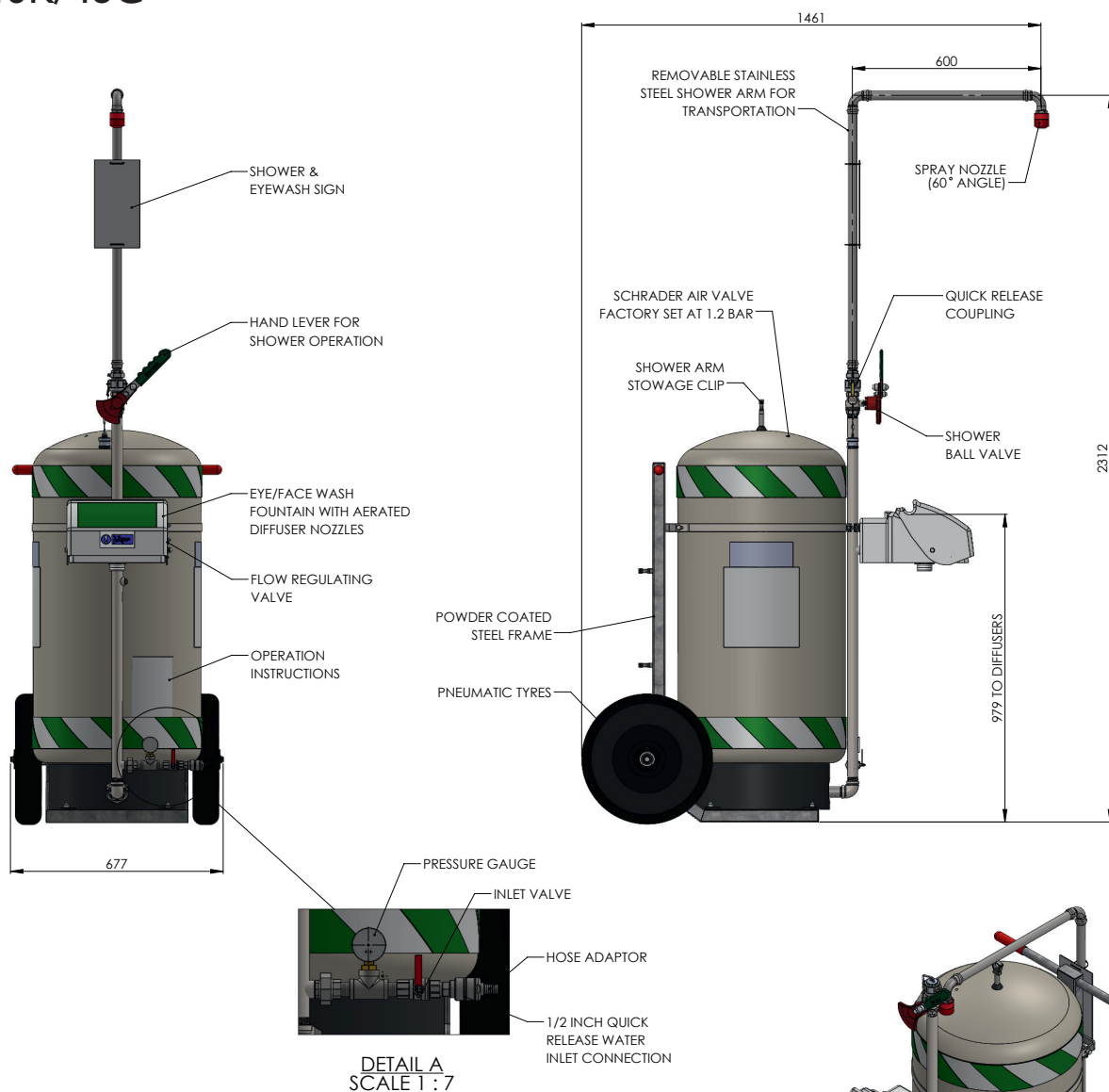


Specifications

MATERIALS OF CONSTRUCTION	
PIPEWORK & FITTINGS	Stainless steel 316
OPERATING VALVE	Stainless steel 316, full bore, stay open ball valve
FRAME	Powder coated mild steel
SHOWER NOZZLE	uPVC
EYE WASH	ASA (acrylonitrile styrene acrylate)
EYE WASH DIFFUSERS	Chrome plated brass retaining ring, stainless steel filter mesh, plastic body
STANDARD FINISH	Powder coated tank
SERVICES	
CAPACITY	114 L / 30 US gal
WATER INLET	1/2" quick release hose connector
OPERATING PRESSURE	3 to 5.5 BAR G / 43 to 79 PSI
MINIMUM FLOW RATES	Shower: 50 L per minute / 13 US gal per minute Eye wash: 12 L per minute / 3 US gal per minute
AMBIENT OPERATING TEMPERATURE	
MINIMUM	5°C / 41F
MAXIMUM	35°C / 95F
OPERATION	
SHOWER	Push down lever
EYE WASH	Pull lid down
DIMENSIONS & WEIGHT	
DIMENSIONS (WxDxH)	Assembled: 677mm (26.6in) x 1461mm (57.5in) x 2312mm (91in)
WEIGHT	80kg (176lb)

Mobile safety shower with eyewash - 114 L – Indoor Use

STD-40K/45G



ISOMETRIC VIEW
(SHOWER ARM ATTACHED TO FRAME WHEN TRANSPORTING)

www.hughes-safety.com