

350L Emergency Tank Shower - Immersion heated

EXP-MH-14KS/350

Protect worker safety, whatever the weather. This emergency tank shower stores 350 litres of water in the heated and insulated overhead tank making it ideal for locations without a reliable water supply or inadequate water pressure. A minimum flow rate of 76 litres of water per minute offers a thorough decontamination of the casualty.

Suitable for both hazardous and non-hazardous environments, the immersion heater maintains the water in the tank within the tepid range of 15°C-38°C allowing it to operate in ambient temperatures down to -35°C.



Specifications

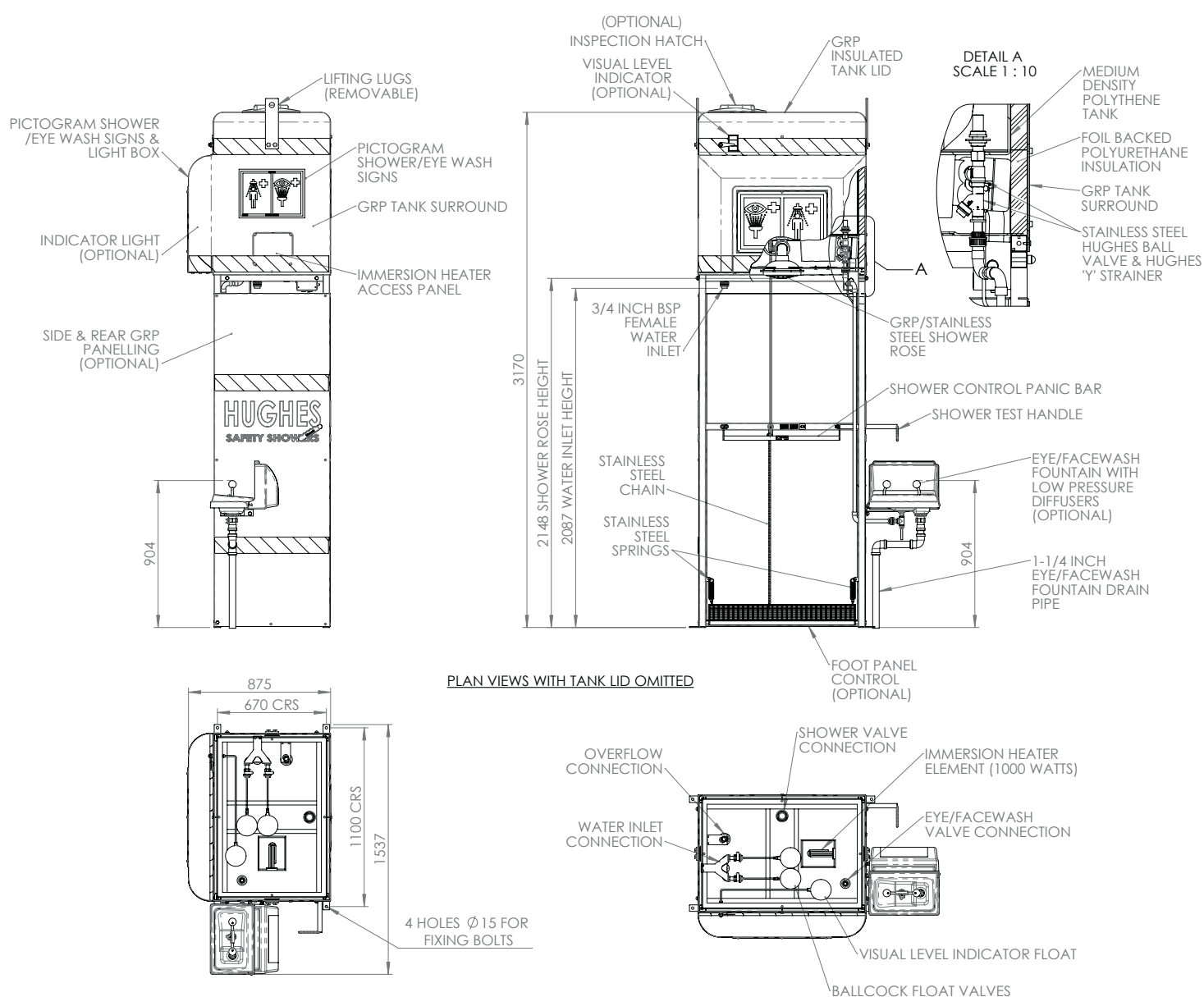
MATERIALS OF CONSTRUCTION	
FRAME AND LEGS	Stainless steel
WATER TANK	350 L (92 US gal) capacity medium density polyethylene MDPE
TANK SURROUND AND LID	GRP
INSULATION	40mm (1 1/2") foil backed polyurethane
PIPING AND VALVE	uPVC and stainless steel
SHOWER CONTROL VALVE	uPVC 1 1/2" ball valve
EYE WASH CONTROL VALVE	1/2" stainless steel full flow ball valve
EYE WASH STRAINER	1/2" stainless steel
BALLCOCK VALVE	2 x 1/2" brass
OVERFLOW	1" male uPVC
SHOWER ROSE	GRP, stainless steel
PANIC BAR	Red powder coated stainless steel
FOOT CONTROL OPTIONS	GRP panel (for shower)
FASTENERS AND FIXINGS	Stainless steel
SERVICES	
ELECTRICAL EQUIPMENT	ATEX Zone 1 & 2. Gas groups IIA & IIB. Temp Class T3 (IIC available) Non-flameproof models available
ELECTRICAL SUPPLY	240V, single phase, 50/60Hz (110V optional)
IMMERSION HEATER RATING	1kW - 230V
WATER INLET	3/4" female BSP
OPERATING PRESSURE	0.5 to 7 BAR G / 7 to 101 PSI
MINIMUM FLOW RATES	Shower: 76 L per minute / 20 US gal per minute Eye/face wash: 12 L per minute / 3 US gal per minute
AMBIENT OPERATING TEMPERATURE	
MINIMUM	-35°C / 14F
MAXIMUM	40°C / 95F

Specifications continued overleaf

350L Emergency Tank Shower - Immersion heated

EXP-MH-14KS/350

OPERATION	
SHOWER	Push activated panic bar or optional GRP foot panel
EYE WASH	Lift lid
DIMENSIONS & WEIGHT	
DIMENSIONS (WxDxH)	1537mm (60.6in) x 880mm (34.6in) x 3170mm (128.1in)
WEIGHT	150kg (331lb)



www.hughes-safety.com