

Indoor wall mounted safety shower with ASA closed eyewash

EXP-33G/45G EXP-33GS/45G

If indoor space is at a premium, this wall mounted combination shower is a great option. The emergency safety shower is activated quickly using the easy-grip pull handle, while the integral lid of the eye/face wash connects to the water valve for automatic operation when the lid is pulled down.

Designed with EN-15154 and ANSI 358.1 standards in mind, the shower nozzle delivers an evenly distributed flow of water at 76 litres per minute. The high flow rate aerated diffusers of the eye wash unit provide a gentle washing action to prevent any further injury to the eyes.



Specifications

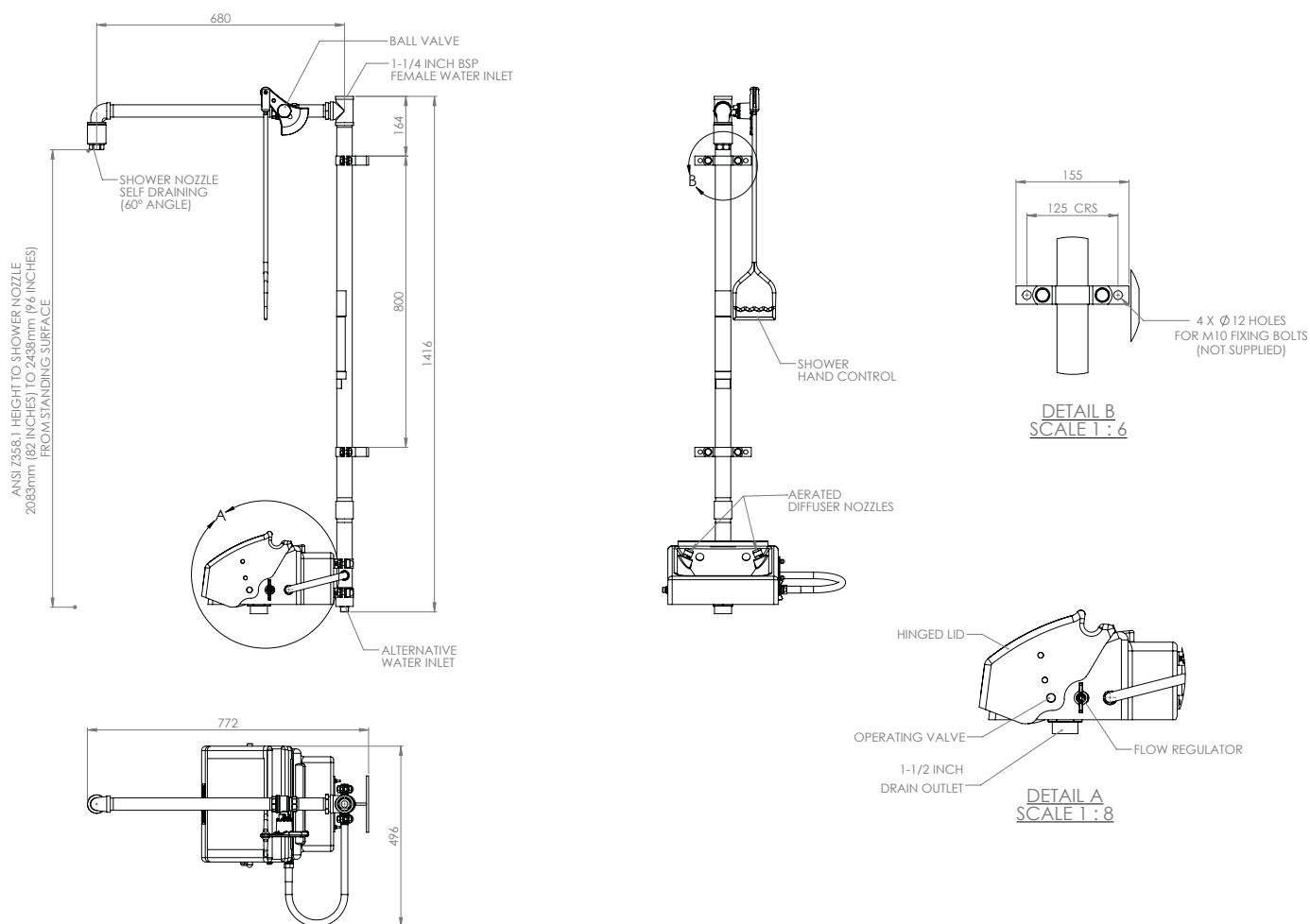
MATERIALS OF CONSTRUCTION	
PIPEWORK & FITTINGS	Stainless steel 316 (GS) or galvanised mild steel (G)
OPERATING VALVE	Stainless steel 316, full bore, stay open ball valve
SHOWER NOZZLE	Injection moulded nylon 6
EYE WASH	ASA (acrylonitrile styrene acrylate)
EYE WASH DIFFUSERS	Chrome plated brass retaining ring, stainless steel filter mesh, plastic body
STANDARD FINISH	Polished brush (GS) or green powder coated (G)
SERVICES	
WATER INLET	1 1/4" female BSP
OPERATING PRESSURE	2 to 6 BAR G / 29 to 87 PSI (higher supply pressures accommodated with the incorporation of the optional pressure reducing valve)
MINIMUM FLOW RATES	Shower: 76 L per minute / 20 US gal per minute Eye wash: 12 L per minute / 3 US gal per minute
AMBIENT OPERATING TEMPERATURE	
MINIMUM	5°C / 41F
MAXIMUM	35°C / 95F
OPERATION	
SHOWER	Pull handle
EYE WASH	Pull lid down
DIMENSIONS & WEIGHT	
DIMENSIONS (WxDxH)	496mm (19.5in) x 772mm (30.4in) x 1416mm (55.7in)
WEIGHT	18kg (40lb)

General Arrangement Drawing



Indoor wall mounted safety shower with ASA closed eyewash

EXP-33G/45G
EXP-33GS/45G



www.hughes-safety.com