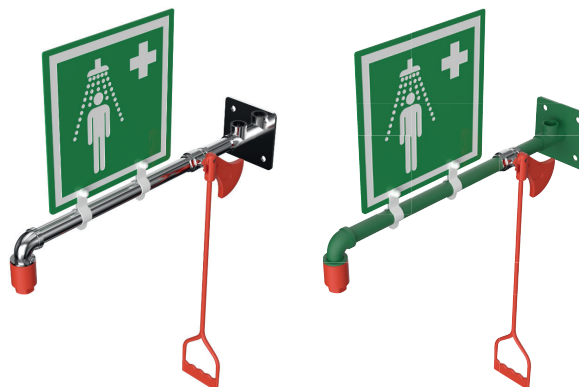


Wall mounted indoor safety shower

EXP-23G/H EXP-23GS/H

Suited to numerous indoor applications, this wall mounted emergency safety shower is perfect where space is at a premium.

Designed to meet EN 15154 and ANSI 358.1 standards the safety shower will deliver 76 litres of water per minute to drench the casualty in the event of an emergency requiring decontamination.



Specifications

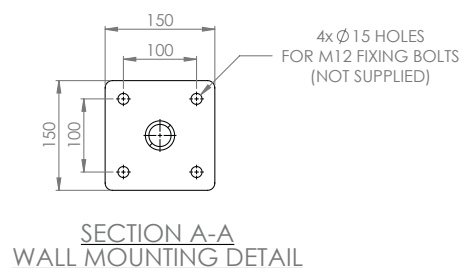
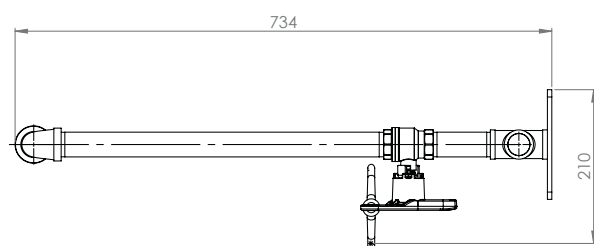
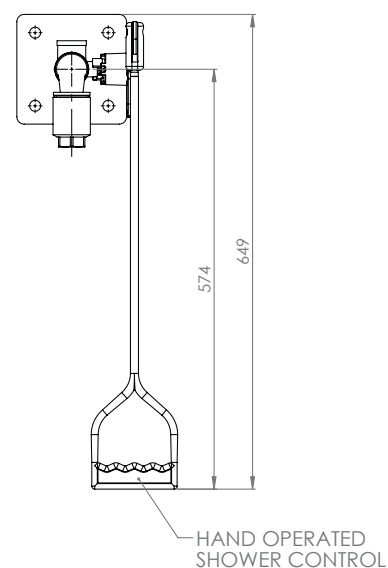
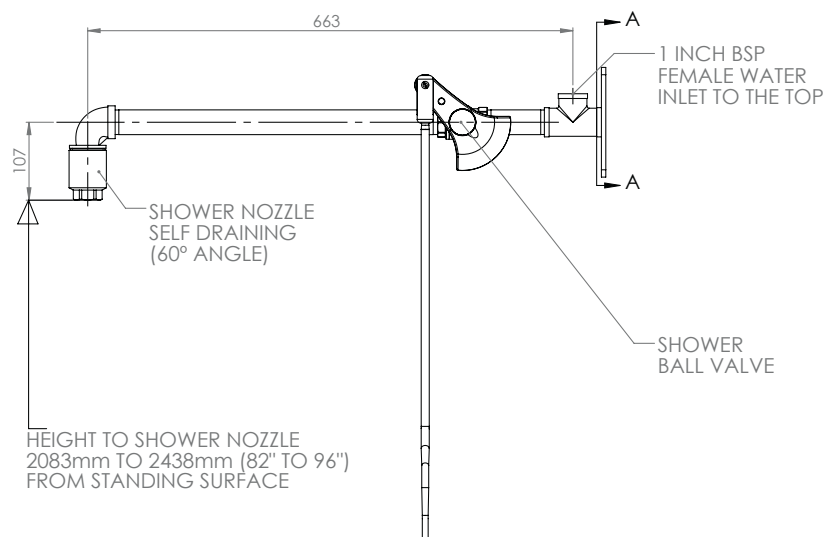
MATERIALS OF CONSTRUCTION	
PIPEWORK & FITTINGS	Stainless steel 316 (GS) or galvanised mild steel (G)
OPERATING VALVE	Stainless steel 316, full bore, stay open ball valve
SHOWER NOZZLE	Injection moulded nylon 6
STANDARD FINISH	Polished brush (GS) or green powder coated (G)
SERVICES	
WATER INLET	1" female BSP
OPERATING PRESSURE	2 to 6 BAR G / 29 to 87 PSI (higher supply pressures accommodated with the incorporation of the optional pressure reducing valve)
MINIMUM FLOW RATES	76 L per minute / 20 US gal per minute
AMBIENT OPERATING TEMPERATURE	
MINIMUM	5°C / 41F
MAXIMUM	35°C / 95F
OPERATION	
SHOWER/BODY SPRAY	Pull handle
DIMENSIONS & WEIGHT	
DIMENSIONS (WxDxH)	210mm (8.3in) x 734mm (28.9in) x 649mm (25.5in)
WEIGHT	5kg (11lb)

General Arrangement Drawing



Wall mounted indoor safety shower

EXP-23G/H
EXP-23GS/H



www.hughes-safety.com