

Indoor safety shower with ASA open bowl eyewash

EXP-18G/75G EXP-18GS/75G

Comprising an overhead drench shower and an eye/face wash, this combination unit is an effective all-in-one decontamination solution. Practical for indoor locations where it will not be liable to freeze or overheat.

The durable ASA open bowl eye/face wash is push plate operated and features twin spray nozzles with dust covers that lift off when the unit is activated. The shower nozzle swiftly delivers an EN-15154 and ANSI 358.1 compliant pattern and flow of water when triggered by the pull down handle.



Specifications

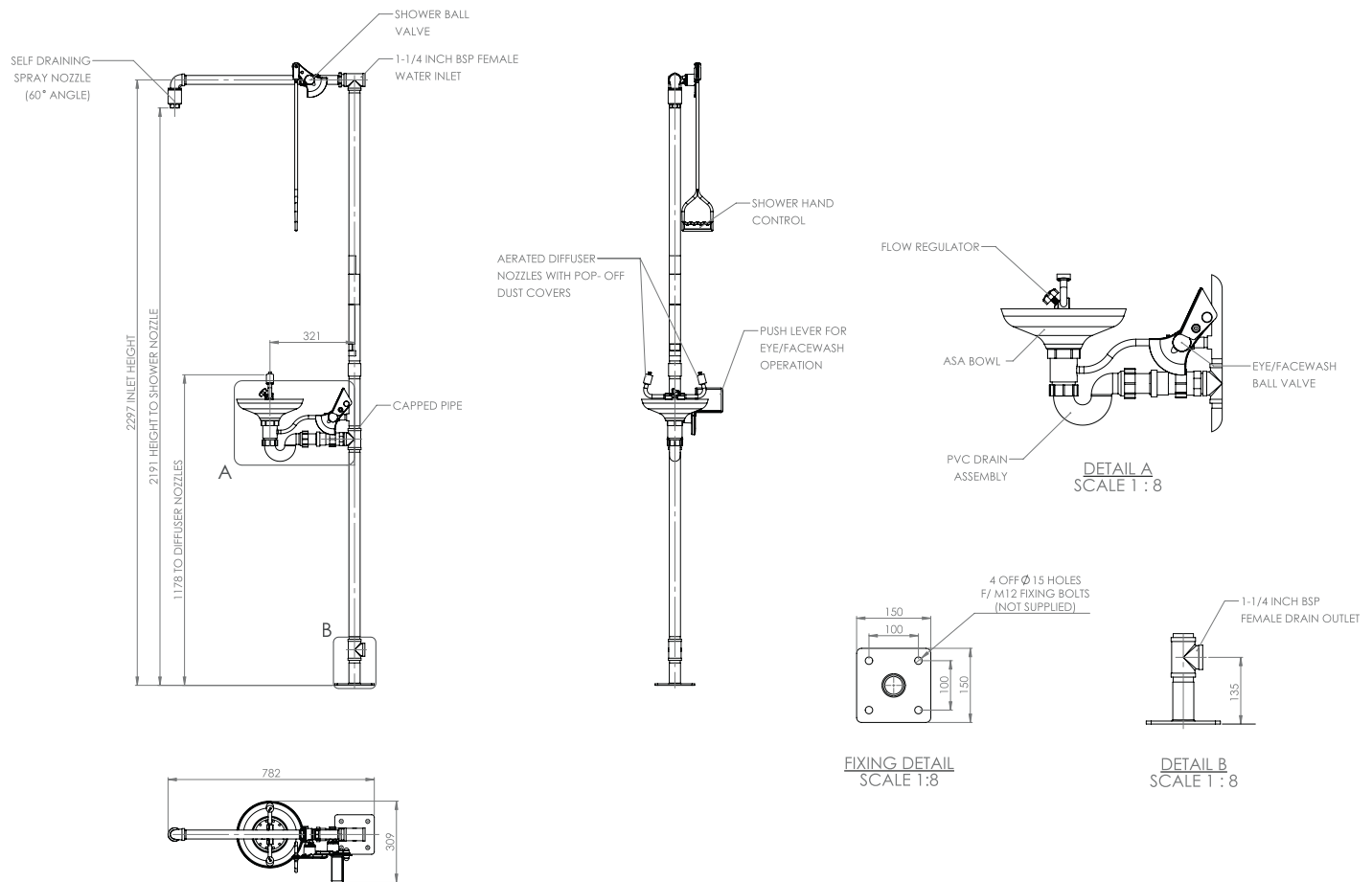
MATERIALS OF CONSTRUCTION	
PIPEWORK & FITTINGS	Stainless steel 316 (GS) or galvanised mild steel (G)
OPERATING VALVE	Stainless steel 316, full bore, stay open ball valve
SHOWER NOZZLE	Injection moulded nylon 6
EYE WASH	ASA (acrylonitrile styrene acrylate)
EYE WASH DIFFUSERS	Chrome plated brass retaining ring, stainless steel filter mesh, plastic body
STANDARD FINISH	Polished brush (GS) or green powder coated (G)
SERVICES	
WATER INLET	1 1/4" female BSP
OPERATING PRESSURE	2 to 6 BAR G / 29 to 87 PSI (higher supply pressures accommodated with the incorporation of the optional pressure reducing valve)
MINIMUM FLOW RATES	Shower: 76 L per minute / 20 US gal per minute Eye wash: 12 L per minute / 3 US gal per minute
AMBIENT OPERATING TEMPERATURE	
MINIMUM	5°C / 41F
MAXIMUM	35°C / 95F
OPERATION	
SHOWER	Pull handle
EYE WASH	Push plate
DIMENSIONS & WEIGHT	
DIMENSIONS (WxDxH)	308mm (12.1in) x 773mm (30.4in) x 2320mm (91.3in)
WEIGHT	16kg (35lb)

General Arrangement Drawing



Indoor safety shower with ASA open bowl eyewash

EXP-18G/75G
EXP-18GS/75G



www.hughes-safety.com