

## Indoor safety shower with ASA closed eyewash

### EXP-18G/45G EXP-18GS/45G

For those at risk of injury from accidental chemical spills in the workplace, this combination safety shower and eye/face wash offers an EN-15154 and ANSI Z358.1-2014 compliant solution.

The floor mounted model is ideal for indoor use and will provide a thorough drenching of 76 litres per minute of water from the shower, and 12 litres per minute when using the eyewash.

Activation is easy and can be made hands-free with the addition of an optional foot treadle.

Also available with a top water inlet.



## Specifications

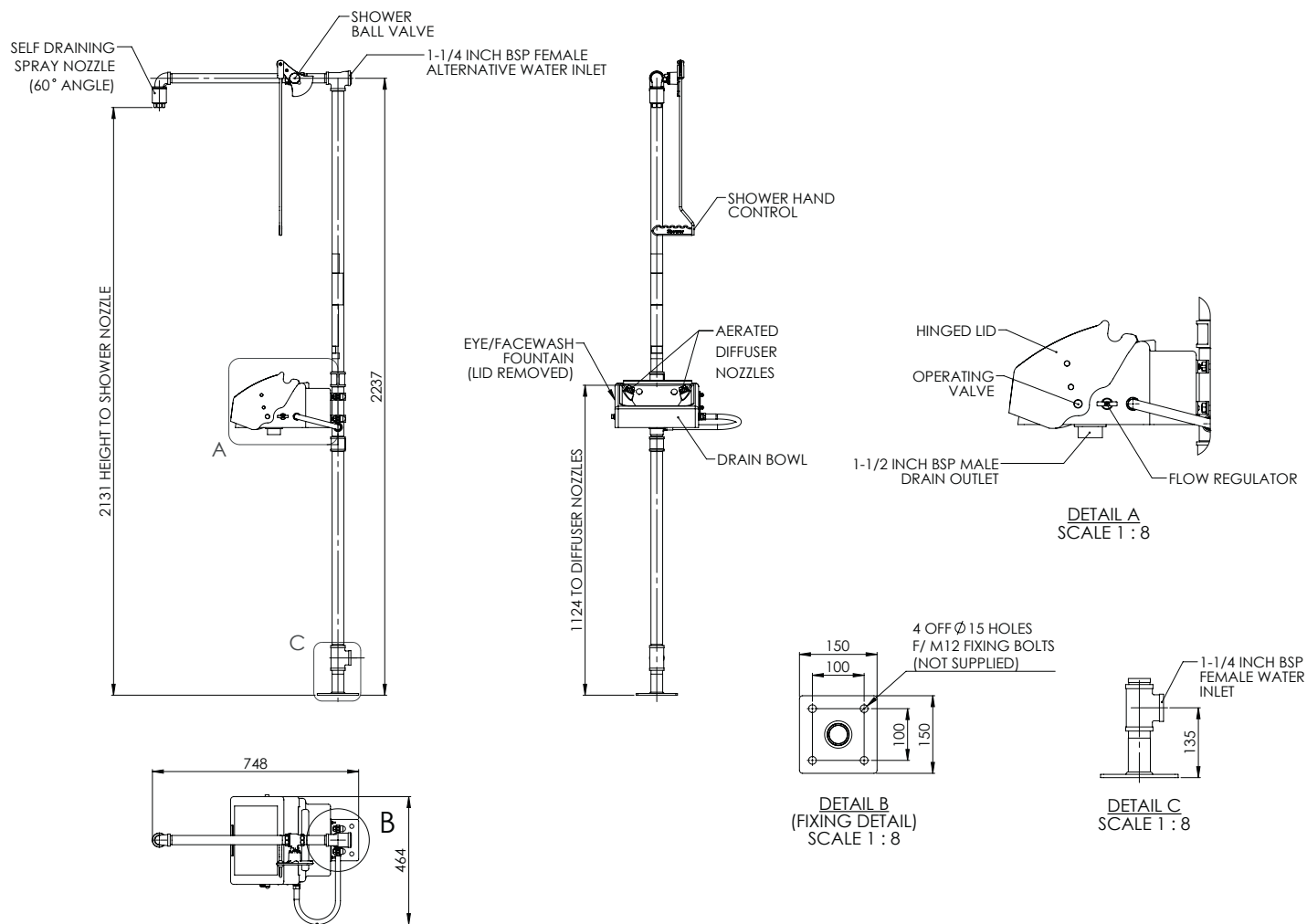
MATERIALS OF CONSTRUCTION	
PIPEWORK & FITTINGS	Stainless steel 316 (GS) or galvanised mild steel (G)
OPERATING VALVE	Stainless-steel 316, full bore, stay open ball valve
SHOWER NOZZLE	Injection moulded nylon 6
EYE WASH	ASA (acrylonitrile styrene acrylate)
EYE WASH DIFFUSERS	Chrome plated brass retaining ring, stainless steel filter mesh, plastic body
STANDARD FINISH	Polished brush (GS) or green powder coated (G)
SERVICES	
WATER INLET	1 1/4" female BSP
OPERATING PRESSURE	2 to 6 BAR G / 29 to 87 PSI (higher supply pressures accommodated with the incorporation of the optional pressure reducing valve)
MINIMUM FLOW RATES	Shower: 76 L per minute / 20 US gal per minute Eye wash: 12 L per minute / 3 US gal per minute
AMBIENT OPERATING TEMPERATURE	
MINIMUM	5°C / 41F
MAXIMUM	35°C / 95F
OPERATION	
SHOWER	Pull handle
EYE WASH	Pull lid down
DIMENSIONS & WEIGHT	
DIMENSIONS (WxDxH)	464mm (18.2in) x 748mm (29.4in) x 2320mm (91.3in)
WEIGHT	17kg (37lb)

# General Arrangement Drawing



## Indoor safety shower with ASA closed eyewash

EXP-18G/45G  
EXP-18GS/45G



[www.hughes-safety.com](http://www.hughes-safety.com)