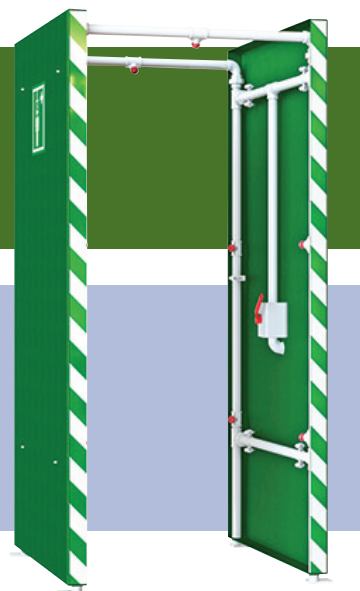


Product Datasheet

DEC-DH-29 DEC-DH-29S Freeze Protected PPE Decontamination Shower

This trace-tape heated and pre-insulated walk-through, self-draining decontamination shower features multiple nozzles to assist with the decontamination process. It can be easily sited by a fork lift truck when the location is of a temporary nature. Also available with GRP drain sump. Suitable for use in hazardous areas. Available with galvanised or 316L stainless steel pipework.



Specifications

MATERIALS OF CONSTRUCTION

PIPEWORK AND FITTINGS	Galvanised mild steel (DEC-DH-29), 316L stainless steel (DEC-DH-29S)
OPERATING VALVES	316L stainless steel
SHOWER SPRAY OUTLET	GRP
PANELLING	Green heavy duty GRP

SERVICES

WATER INLET	1 1/2" Female BSP
OPERATING PRESSURE	4 to 6 BAR G (57 to 87 PSI) (higher supply pressures accommodated with the incorporation of the optional pressure reducing valve)
TEST PRESSURE	10.3 BAR G (149 PSI)
MINIMUM FLOW RATES	250 litres/minute minimum (66 US gallons)
ELECTRICAL SUPPLY	230V, single phase, 50/60Hz (110V optional)

ENVIRONMENTAL OPERATING TEMPERATURE

MINIMUM AMBIENT OPERATING TEMPERATURE	-10° C (-4° F)
MAXIMUM AMBIENT OPERATING TEMPERATURE	35° C (95° F)

OPERATIONAL

SHOWER SPRAY NOZZLE	Hand activated
---------------------	----------------

WEIGHTS and DIMENSIONS

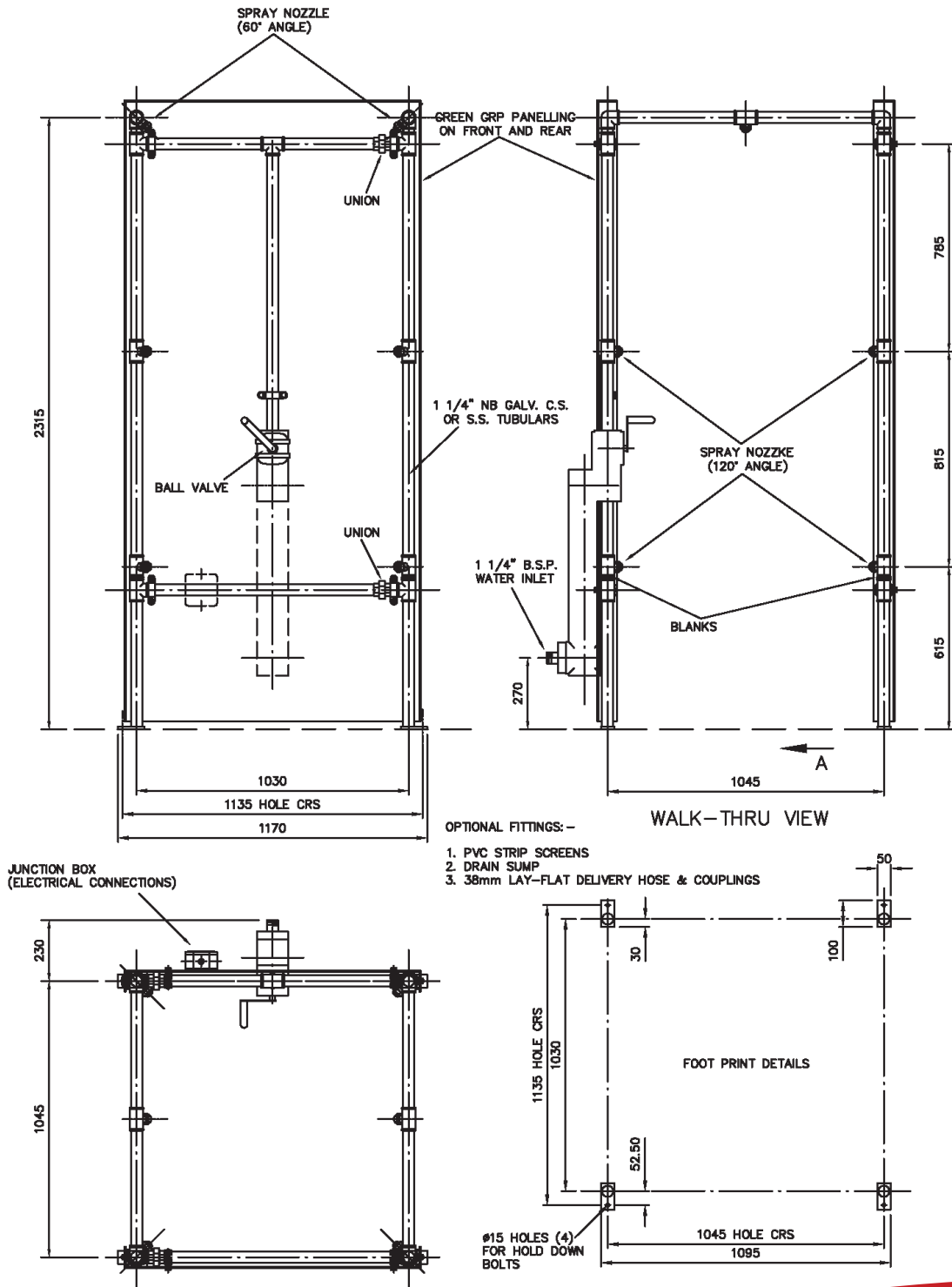
DIMENSIONS (WxDxH)	1110mm (43.7in) x 1300mm (51.2in) x 2400mm (94.5in)
WEIGHT (NO OPTIONS)	160kg (353lbs)

View our Guide to the ANSI/ISEA Z358.1-2014 International Standard for Emergency Eyewash and Shower Equipment at www.hughes-safety.com



**DEC-DH-29
DEC-DH-29S**

Freeze Protected PPE Decontamination Shower



HUGHES



HUGHES-SAFETY.COM

a Justrite® Group Company

Hughes Safety Showers Ltd, Whitefield Road, Bredbury, Stockport SK6 2SS UK.

Email: info@hughes-safety.com

Tel: +44 (0)161 430 6618

Registered No. 0939240. VAT Registration No. 918 5005 32. Hughes Safety Showers Ltd is a Justrite Group Company.

V1.1